



Sappi is now inviting printers to participate in the 2009 Sappi Printers of the Year awards. The search for the best print has already begun and we urge you to send us your outstanding print on Sappi paper!

**The deadline for entries is 31 January 2009.**

## Who can enter

Sappi invites printers from all over the world to participate by submitting their best print work. All printers are eligible to enter. Suppliers and clients of the printer may submit the printer's work providing that the printer approves and signs the entry form. The entry must have been printed between 01 January and 31 December 2008. Work commissioned by Sappi or its operating companies is not eligible for entry. The same printer may submit several entries. Additional entry forms are available from your local Sappi sales office or on the Internet at [www.sappi.com/PrintersOfTheYear](http://www.sappi.com/PrintersOfTheYear)

## How to enter

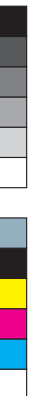
Complete the judging and general information sections of the entry form and combine them with your entry. Submit at least two copies of each entry. Do not use staples and ensure that your entry is well protected and in immaculate condition. An incomplete entry form may lead to disqualification by the judging committee. Deliver or post your entry to any Sappi sales office, paper merchant or agent. Should a submitted entry be awarded a regional gold award, thus advancing to the international awards, two additional copies of the entry will be required.

## Conditions of entry

The details on the entry form are accepted as correct and accurate and all awards will be made according to this information. Winners and their entries will be photographed and promoted by Sappi. It is the full responsibility of the printer to obtain agreement from their client to enter the work. The judges reserve the right to reallocate an entry to a different category at their discretion. The judges refrain from judging their company's entries. The judges reserve the right not to nominate winners and also to award merit certificates as they see fit. The judges' decision is final and no discussions will be entered into.

Entries will not be returned unless requested in writing and will become part of Sappi's library of commercially printed samples. Irrespective of the person/company submitting the entry, the awards are made to the printer/company that printed the winning entry.

**All information must be fully completed. Please use a black pen and write clearly. Business cards may be attached, but please complete the additional information and sign the entry form. Please submit at least two copies of your entry.**





## The awards

Bronze, silver and gold awards are presented in nine categories in four regional competitions; Europe, North America, Africa and Trading (Central and South America, Asia and Australasia). The winning printers and their partners are invited to receive their awards at gala awards celebrations held at prestigious venues appropriately chosen to recognise the best of the best.

### Categories

Annual Reports	General Print
Books	Magazines
Brochures	Packaging and Labels
Calendars	Printer's Own Promotion
Catalogues	

The nine gold award winners at these regional events will be invited to meet each other at a single spectacular event, and to take up the challenge of being chosen as a Sappi International Printer of the Year in their respective categories. These are the ultimate accolades in the global printing industry.

## Triple Excellence Award

In honour of outstanding performance, Sappi grants a Triple Excellence Award to a printer that wins a gold award in the same category for three consecutive years. Any printer who receives this award may not submit an entry in the same category for the following two years, after which time they may again submit an entry into this category.

## Judging criteria

The judging of the awards has been carefully structured to ensure the highest possible standards, coupled with a balanced perspective. Each entry remains anonymous throughout.

<b>Overall impact</b>	<b>20 points</b>
<b>Degree of difficulty</b>	<b>20 points</b>
<b>Technical excellence</b>	<b>60 points</b>

A complete copy of the judging criteria and last year's jury report is available at [www.sappi.com/PrintersOfTheYear](http://www.sappi.com/PrintersOfTheYear)

## Paper

Except Printer's Own Promotion, all entries must be commercially printed on, or mainly on, a Sappi grade of paper. For information on Sappi's papers and stockists contact your local Sappi sales office or visit [www.sappi.com/ProductsAndSamples](http://www.sappi.com/ProductsAndSamples)

CYAN  
MAGENTA  
YELLOW  
BLACK



# Entry Form

Europe  Africa  Trading

Entry details

Title of entry

Language of entry

Country where printed

Name of end-customer

Name of designer/agency

Printer's details

Company

(Alternatively attach a business card and sign)

First name (Mr/Ms)

Last name

Position

Address

City

Code

Country

Phone

Fax

E-Mail

Website

Signature

Printer  End-user  Designer  Merchant

Submitter's details

Company

(Alternatively attach a business card and sign)

First name (Mr/Ms)

Last name

Position

Address

City

Code

Country

Phone

Fax

E-Mail

Website

Signature

To be filled in by Sappi



# Entry Form

Europe  Africa  Trading

Entry details

Title of entry

## Category

- Annual Reports
- Books
- Brochures
- Calendars
- Catalogues
- General Print
- Labels
- Magazines (Sheetfed)
- Magazines (Web)
- Packaging
- Printer's Own Promotion

## Printing process

- Digital Printing
- Flexo
- Gravure
- Heat-Set Web Offset
- Sheetfed Offset
- Screen Printing

## Printing techniques

- Die cutting
- Duo tone
- Embossing
- Foils
- Fragrance
- Full colour print
- Holographic lamination
- Special inks (please specify)  
-----  
-----  
-----
- Special binding and folding
- Varnish (please specify)  
-----  
-----  
-----

Name of paper

Text

Grammage

Cover

Grammage

Completely printed on Sappi paper

Mainly printed on Sappi paper (please specify) -----

Printing press

Colour sequence per pass

Screen

(dpi)

Length of print run

(copies)

Special treatments and finishing

Other information

To be filled in by Sappi

